

**NOTES:**

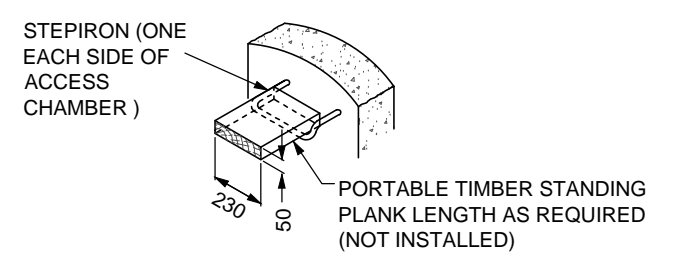
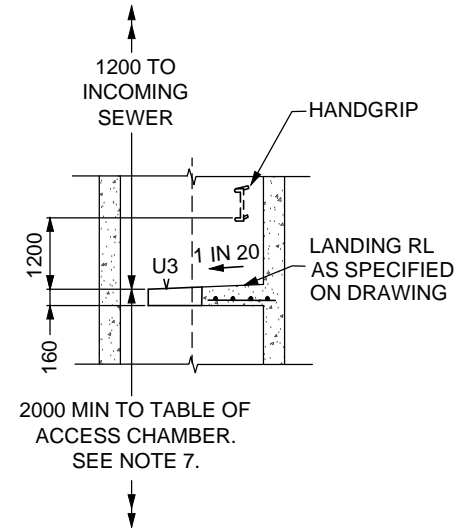
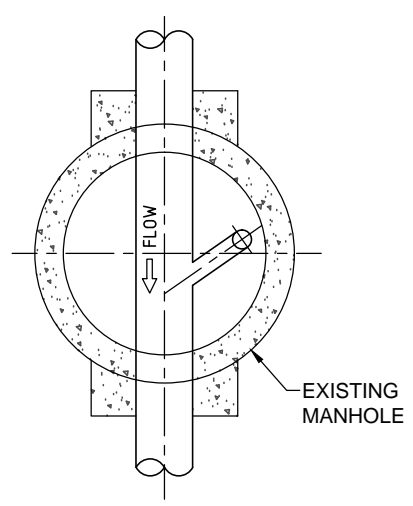
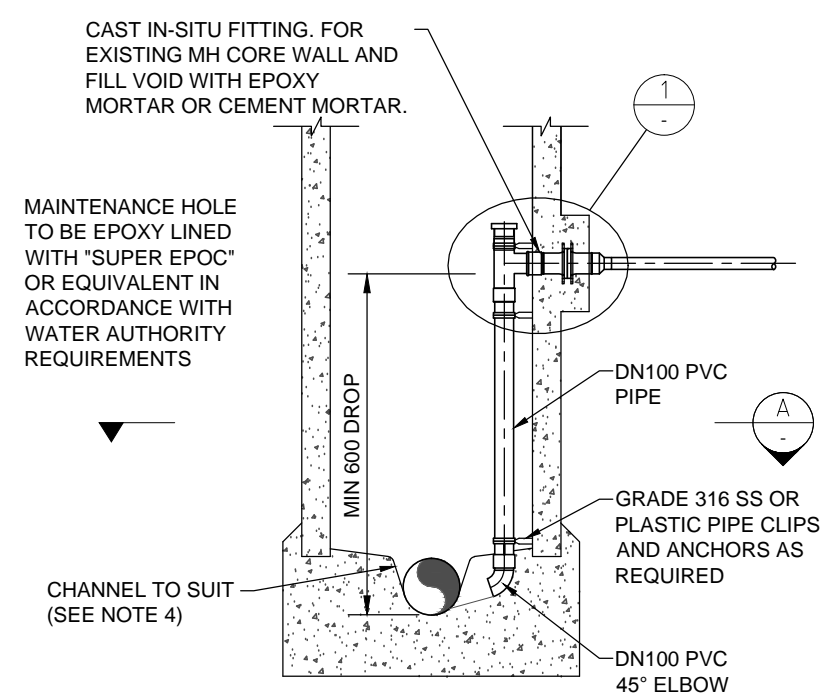
1. ALL DIMENSIONS IN MILLIMETRES.
2. THIS DRAWING TO BE READ IN CONJUNCTION WITH SEW-1300 & SEW-1301.
3. FOR EXISTING PRECAST MH APPLICATIONS CORED HOLE TO BE 150 MIN ABOVE OR BELOW SHAFT SECTION JOINT.
4. DISCHARGE PIPE AND CHANNEL PLACEMENT TO DIRECT SEWAGE IN DIRECTION OF MAIN FLOW. SEE SEW-1304 AND SEW-1305.
5. CONNECTION AND DROP MUST BE DESIGNED WHERE THE PRESSURE SEWER IS >90 OD.
6. DN 1200 MH TO BE USED WHERE DROP PIPE >180 OD OR MORE THAN TWO x 180 OD INTERNAL DROPS ARE USED.
7. WHERE THE PRESSURE SEWER ENTERS THE MH MORE THAN 3200 ABOVE THE MH TABLE, A LANDING MUST BE SPECIFIED 1200 BELOW THE IL OF THE INCOMING SEWER.
8. AN ISOLATION VALVE SHALL BE INSTALLED PRIOR TO THE DISCHARGE MAINTENANCE HOLE OF ANY PRESSURE SEWER SYSTEM (REFER STANDARD DETAIL PSS-1010-M).

**WORKS ON LIVE SEWERS**

9. ONLY WATER AGENCY APPROVED CONTRACTORS, APPROVED FOR WORK ON LIVE SEWERS, ARE PERMITTED TO BREAK INTO, ENTER OR CARRY OUT WORK IN LIVE SEWERS OR MAINTENANCE HOLES.
10. CURRENT CERTIFICATES ARE REQUIRED FOR ALL PERSONNEL INVOLVED WITH WORK ON LIVE SEWERS AND THE CONTRACTOR MUST COMPLY WITH WATER AGENCY REQUIREMENTS.
11. WHEN WORKING IN LIVE SEWERS THE CONTRACTOR SHALL STRICTLY COMPLY WITH:
  - THE WATER AGENCY CONFINED SPACE ENTRY - SAFE WORK PROCEDURE;
  - VICTORIAN CONFINED SPACES REGULATION 1996.

**CONNECTIONS**

12. ANY BUTT FUSION JOINTING OF HDPE PIPE SHOULD BE IN ACCORDANCE WITH POP003- 'BUTT FUSION JOINTING OF PE PIPES AND FITTINGS'
13. ANY ELECTROFUSION JOINTING OF HDPE PIPE SHOULD BE IN ACCORDANCE WITH POP001 - 'ELECTROFUSION JOINTING OF PE PIPE AND FITTINGS FOR PRESSURE APPLICATIONS.'
14. ANY FLANGED JOINTING OF HDPE PIPE SHOULD BE IN ACCORDANCE WITH POP007 - 'META BACKING FLANGES FOR USE WITH PE PIPE FLANGE ADAPTORS', PLASTICS PIPE INSTITUTION TECHNICAL NOTE 38 - 'BOLT TORQUE FOR POLYETHYLENE FLANGE JOINTS, AND MANUFACTURERS GUIDELINES/RECOMMENDATIONS, ALL FLANGES MUST BE FULL FACE, UNLESS OTHERWISE NOTED.'



**SUPPORT FOR STANDING PLANK**

STEPIRON INSTALLED IN THE SAME MANNER AS THE ACCESS STEPIONS. LEVEL 1200 BELOW INCOMING TYPE 3 DROP. HAND GRIPS ALSO REQUIRED.

4	PUBLISHED FIRST ISSUE	11/10/12	C. PAXMAN	DESIGNED: S. FRENCH	DATE: 2008
3	NEW CONNECTION DETAIL, NO THRUST RESTRAINT	17/01/12		DRAWN: D.T.	DATE: 09/11/09
2	NOTE ADDED	10/03/11		CHECKED: INITIALS DATE	APPROVED: INITIALS DATE
1	GENERAL AMENDMENTS	24/02/10		<input checked="" type="checkbox"/> CWW D.M. 22/08/12	<input checked="" type="checkbox"/> CWW R.J. 22/08/12
0	ISSUED AS STANDARD	09/11/09		<input checked="" type="checkbox"/> SEW S.S. 7/08/12	<input checked="" type="checkbox"/> SEW C.P. 7/08/12
REV	DESCRIPTION	DATE	APP'D	<input checked="" type="checkbox"/> YVWL K.D. 9/10/12	<input checked="" type="checkbox"/> YVWL A.C. 9/10/12



**PRESSURE SEWER SYSTEM MAINTENANCE STRUCTURES DROP STRUCTURE IN EXISTING MAINTENANCE HOLE**

SCALE: N.T.S	@A3
SHEET: 1 OF 1	
DRAWING No.:	REV
PSS-1019-M	4